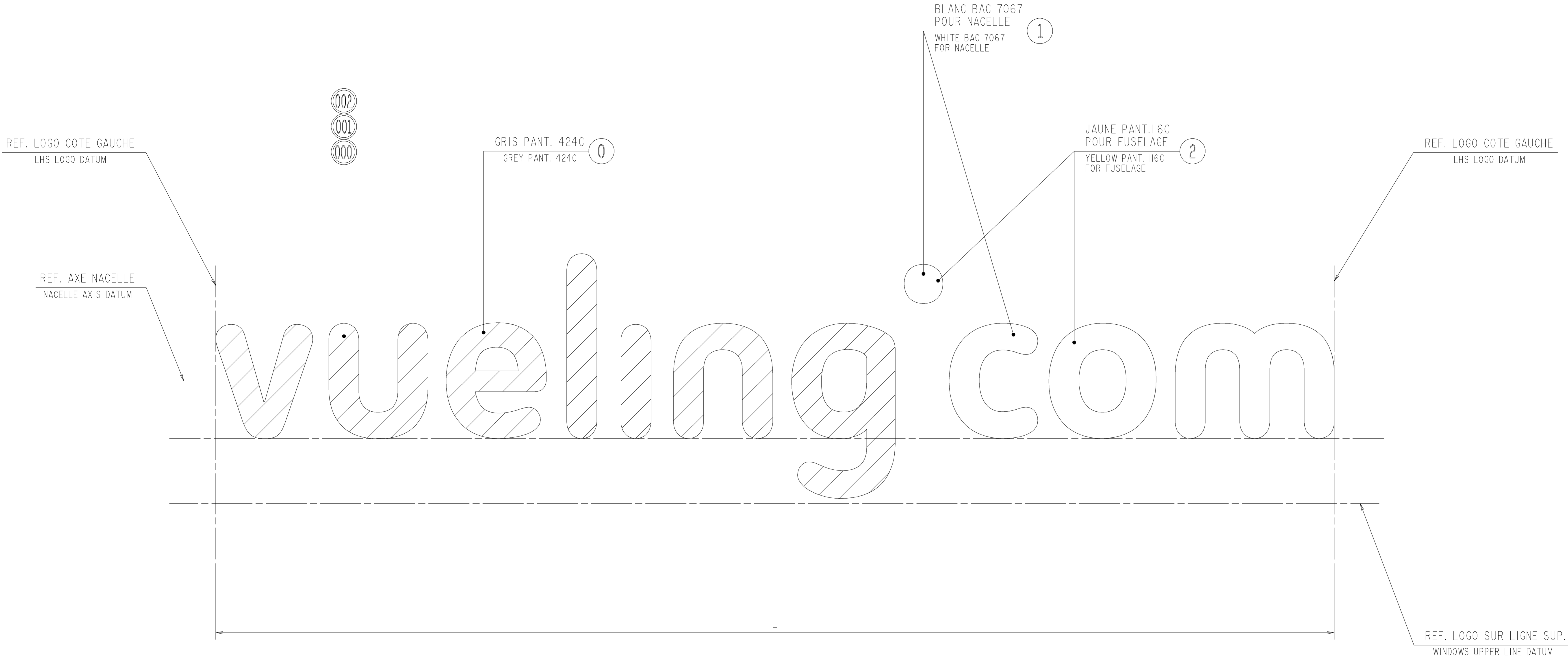


MODIFICATIONS

ISSUE	ECN	34480	AIH04
A	DRN	RIVIERE	
ISSUE	ECN	35061	G807
B	DRN	CLAIRIS TECH	

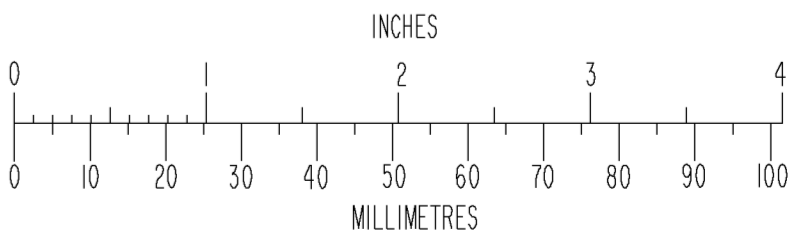



NOTA :

- L= 5500 SUR FUSELAGE POUR MSN 2227
- L= 2300 SUR NACELLE
- L= 6600 SUR FUSELAGE A PARTIR DU MSN 2388

NOTE :

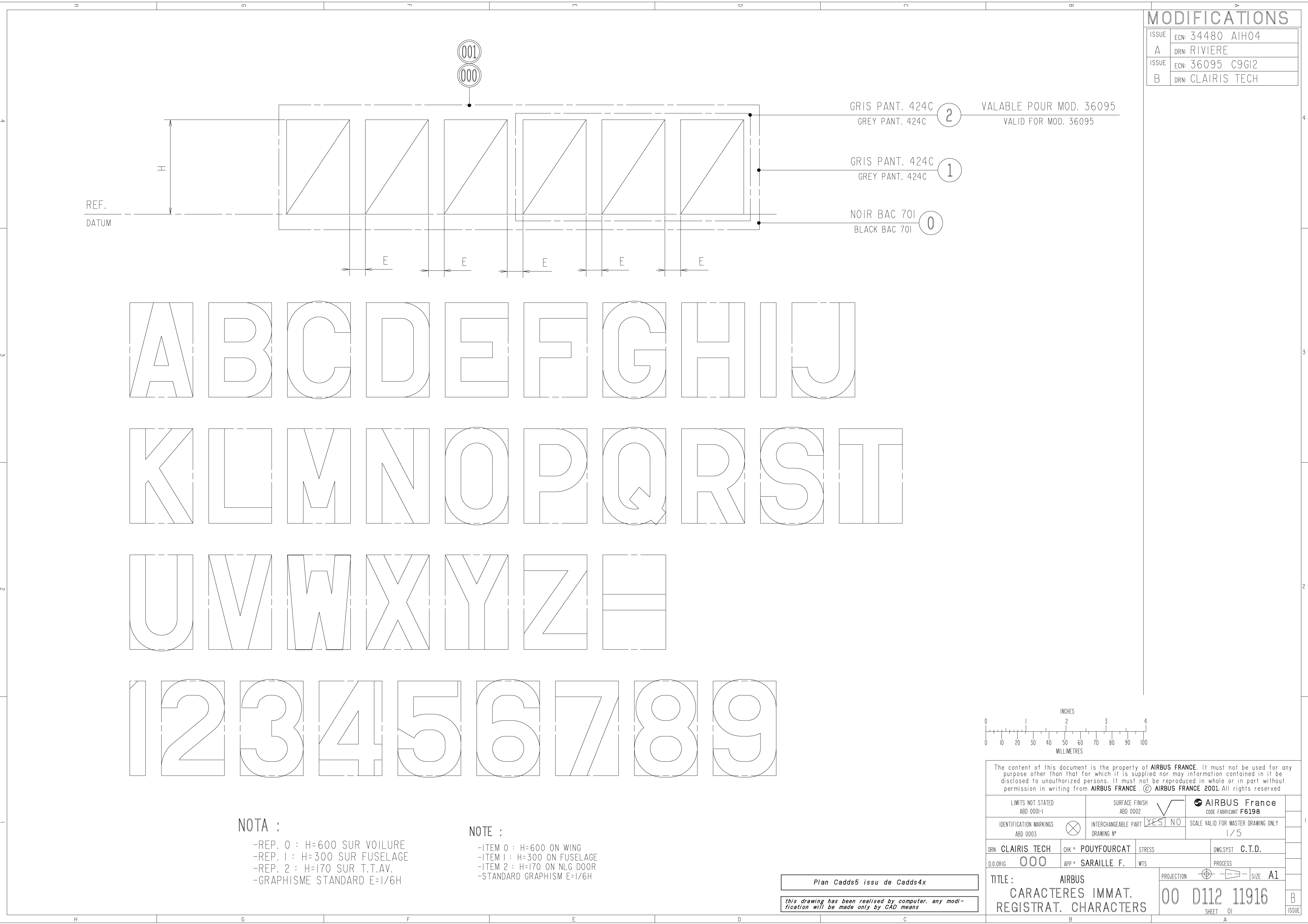
- L= 5500 ON FUSELAGE FOR MSN 2227
- L= 2300 ON NACELLE
- L= 6600 ON FUSELAGE FROM MSN 2388



The content of this document is the property of AIRBUS FRANCE . It must not be used for any purpose other than that for which it is supplied nor may information contained in it be disclosed to unauthorized persons. It must not be reproduced in whole or in part without permission in writing from AIRBUS FRANCE . © AIRBUS FRANCE 2001 . All rights reserved.									
LIMITS NOT STATED ABD 0001-I		SURFACE FINISH ABD 0002		<input checked="" type="checkbox"/>		AIRBUS France CODE FABRICANT F6198			
IDENTIFICATION MARKINGS ABD 0003		INTERCHANGEABLE PART DRAWING N°		<input checked="" type="checkbox"/> YES <input type="checkbox"/> NO		SCALE VALID FOR MASTER DRAWING ONLY 1/10			
DRN	CLAIRIS TECH	CHK *	ARNE	STRESS		DWG SYST	C.T.D.		
D.O. ORIG	000	APP *	SARAILLE	WTS		PROCESS			
TITLE :						PROJECTION		SIZE	A0
AIRBUS WUELING SUR FUS./NAC WUELING ON FUS./NAC.						00 D112 11914			B
				SHEET		01		ISSUE	

Plan Cadd5 issu de Cadd4x

this drawing has been realized by computer. any modification will be made only by CAD means



MODIFICATIONS

ISSUE	ECN: 34480 AIH04
A	DRN: RIVIERE
ISSUE	ECN: 36095 C9G12
B	DRN: CLAIRIS TECH

GRIS PANT. 424C
GREY PANT. 424C

2

VALABLE POUR MOD. 36095
VALID FOR MOD. 36095

GRIS PANT. 424C
GREY PANT. 424C

1

NOIR BAC 70I
BLACK BAC 70I

0

A B C D E F G H I J

K L M N O P Q R S T

U V W X Y Z

1 2 3 4 5 6 7 8 9

NOTA :

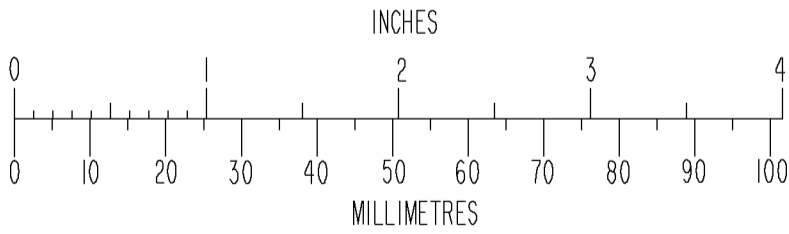
- REP. 0 : H=600 SUR VOILURE
- REP. 1 : H=300 SUR FUSELAGE
- REP. 2 : H=170 SUR T.T.AV.
- GRAPHISME STANDARD E=1/6H

NOTE :

- ITEM 0 : H=600 ON WING
- ITEM 1 : H=300 ON FUSELAGE
- ITEM 2 : H=170 ON NLG DOOR
- STANDARD GRAPHISM E=1/6H

Plan Cadds5 issu de Cadds4x

this drawing has been realised by computer. any modification will be made only by CAD means

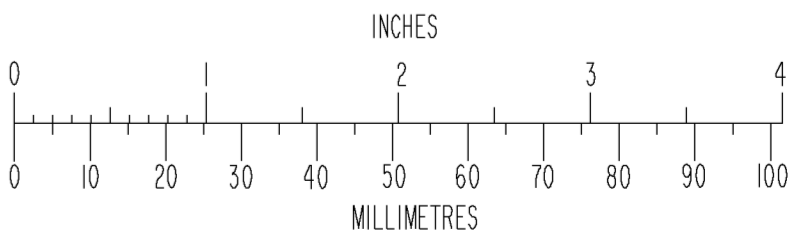
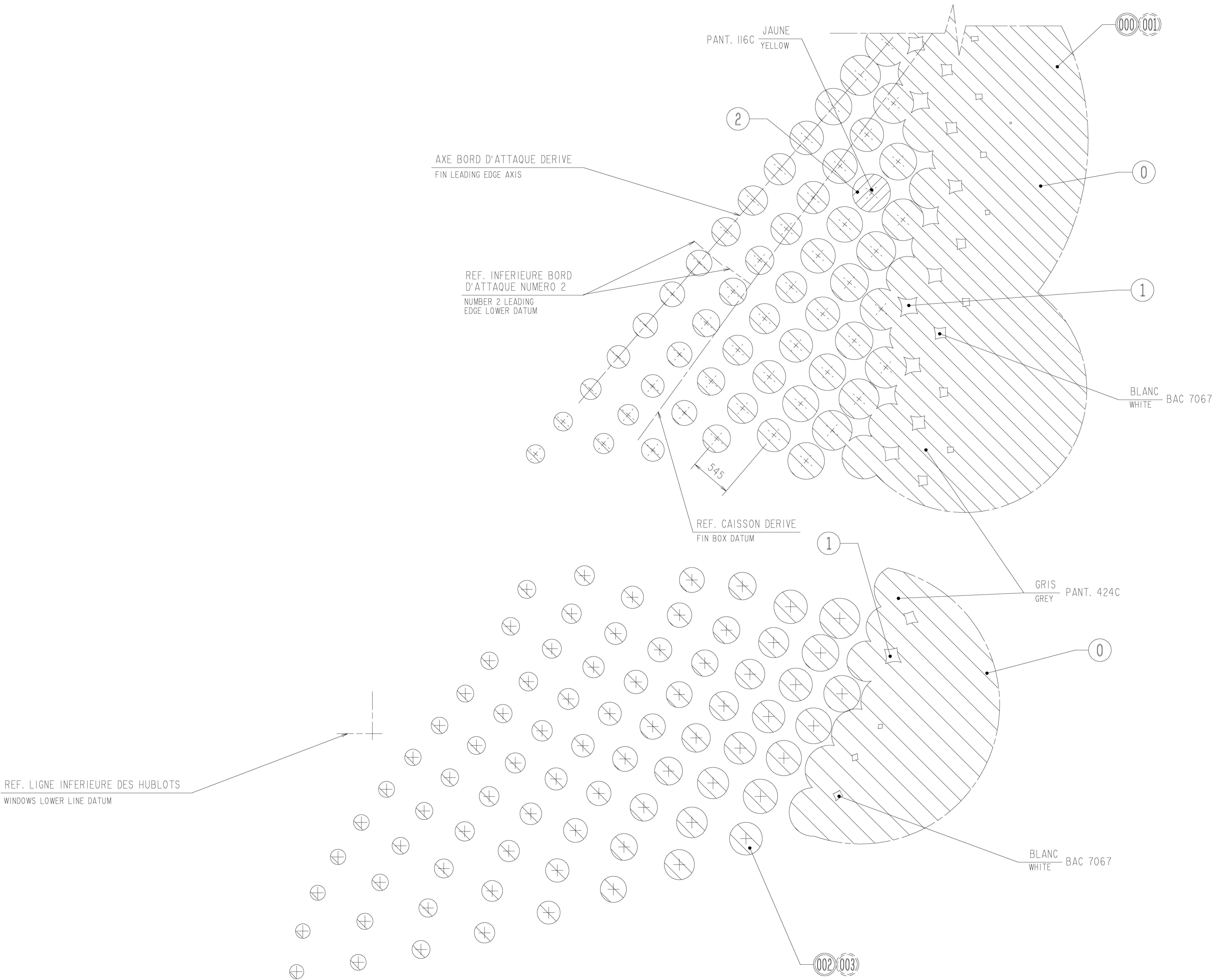


The content of this document is the property of AIRBUS FRANCE. It must not be used for any purpose other than that for which it is supplied nor may information contained in it be disclosed to unauthorized persons. It must not be reproduced in whole or in part without permission in writing from AIRBUS FRANCE. © AIRBUS FRANCE 2001. All rights reserved

LIMITS NOT STATED ABD 0001-1	SURFACE FINISH ABD 0002	<input checked="" type="checkbox"/> YES <input type="checkbox"/> NO	AIRBUS France CODE FABRICANT F6198
IDENTIFICATION MARKINGS ABD 0003	INTERCHANGEABLE PART DRAWING N°	<input checked="" type="checkbox"/> YES <input type="checkbox"/> NO	SCALE VALID FOR MASTER DRAWING ONLY 1/5
DRN CLAIRIS TECH	CHK P POUYFOURCAT	STRESS	DWG.SYST C.T.D.
D.O.ORIG 000	APP P SARAILLE F.	WTS	PROCESS
TITLE : AIRBUS CARACTERES IMMAT. REGISTRAT. CHARACTERS			PROJECTION <input checked="" type="checkbox"/> <input type="checkbox"/> SIZE A1
SHEET 01			B
A			ISSUE

MODIFICATIONS

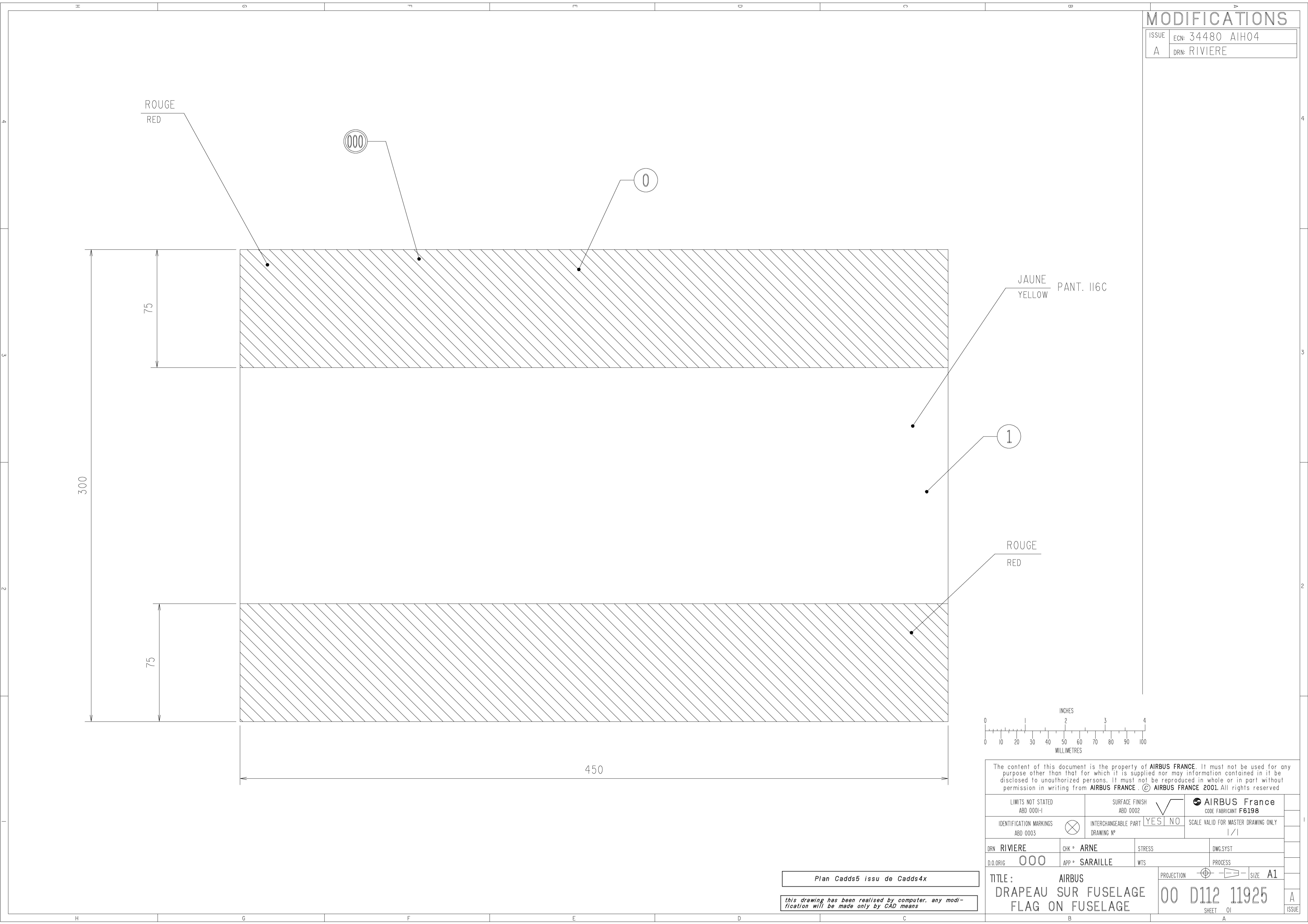
ISSUE	ECON	34480	AIH04
A	DRN	RIVIERE	
ISSUE	ECON	34480	AIH04
B	DRN	RIVIERE	
ISSUE	ECON	36095	13L04
C	DRN	CLAIRIS TECH.	



The content of this document is the property of AIRBUS FRANCE . It must not be used for any purpose other than that for which it is supplied nor may information contained in it be disclosed to unauthorized persons. It must not be reproduced in whole or in part without permission in writing from AIRBUS FRANCE . © AIRBUS FRANCE 2001 . All rights reserved.			
LIMITS NOT STATED ABD 0001-I	SURFACE FINISH ABD 0002	<input checked="" type="checkbox"/> YES <input type="checkbox"/> NO	AIRBUS France CODE FABRICANT F6198
IDENTIFICATION MARKINGS ABD 0003	INTERCHANGEABLE PART DRAWING N°	<input checked="" type="checkbox"/> YES <input type="checkbox"/> NO	SCALE VALID FOR MASTER DRAWING ONLY 1/20
DRN CLAIRIS TECH.	CHK * POUYFOURCAT	STRESS	DWG SYST C.T.D.
D.O. ORIG 000	APP * SARAILLE	WTS	PROCESS
TITLE : AIRBUS LOGO SUR DERIVE/FUS. FIN/FUS. LOGO		PROJECTION	SIZE A0
		00 D112 11917	C
		SHEET 01	ISSUE

Plan Cadd5 issu de Cadd4x

this drawing has been realised by computer. any modification will be made only by CAD means



MODIFICATIONS

ISSUE	ECN: 34480	AIH04
A	DRN: RIVIERE	

The content of this document is the property of **AIRBUS FRANCE**. It must not be used for any purpose other than that for which it is supplied nor may information contained in it be disclosed to unauthorized persons. It must not be reproduced in whole or in part without permission in writing from **AIRBUS FRANCE**. © **AIRBUS FRANCE 2001**. All rights reserved

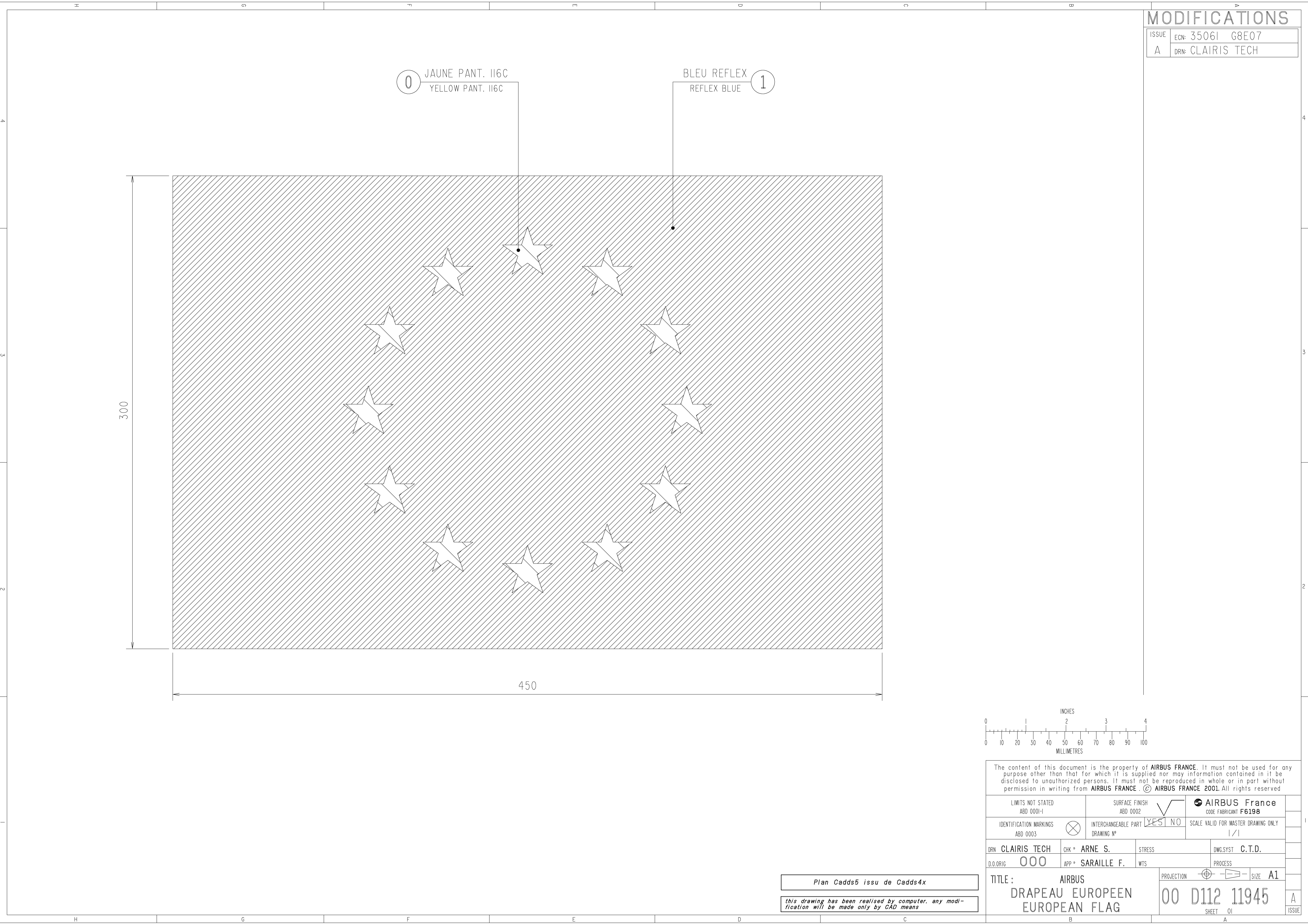
LIMITS NOT STATED ABD 0001-1	SURFACE FINISH ABD 0002	<input checked="" type="checkbox"/>	AIRBUS France CODE FABRICANT F6198
IDENTIFICATION MARKINGS ABD 0003	INTERCHANGEABLE PART DRAWING N°	YES NO	SCALE VALID FOR MASTER DRAWING ONLY 1/1

DRN RIVIERE	CHK * ARNE	STRESS	DWG.SYST
D.O.ORIG 000	APP * SARAILLE	WTS	PROCESS

TITLE : AIRBUS DRAPEAU SUR FUSELAGE FLAG ON FUSELAGE	PROJECTION	SIZE A1
00 D112 11925	SHEET 01	A

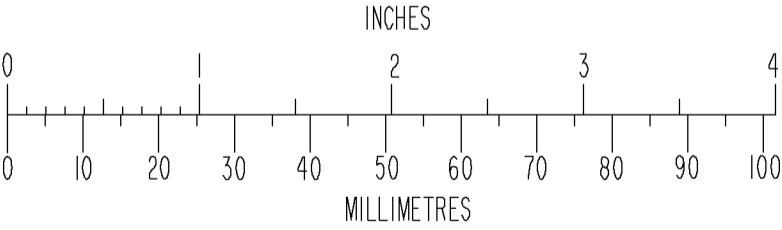
Plan Cadds5 issu de Cadds4x

this drawing has been realised by computer. any modification will be made only by CAD means



MODIFICATIONS

ISSUE	ECN: 35061	G8E07
A	DRN: CLAIRIS TECH	



The content of this document is the property of **AIRBUS FRANCE**. It must not be used for any purpose other than that for which it is supplied nor may information contained in it be disclosed to unauthorized persons. It must not be reproduced in whole or in part without permission in writing from **AIRBUS FRANCE**. © **AIRBUS FRANCE 2001**. All rights reserved

LIMITS NOT STATED ABD 0001-1	SURFACE FINISH ABD 0002	<input checked="" type="checkbox"/> YES <input type="checkbox"/> NO	AIRBUS France CODE FABRICANT F6198
IDENTIFICATION MARKINGS ABD 0003	INTERCHANGEABLE PART DRAWING N°	<input checked="" type="checkbox"/> YES <input type="checkbox"/> NO	SCALE VALID FOR MASTER DRAWING ONLY 1/1

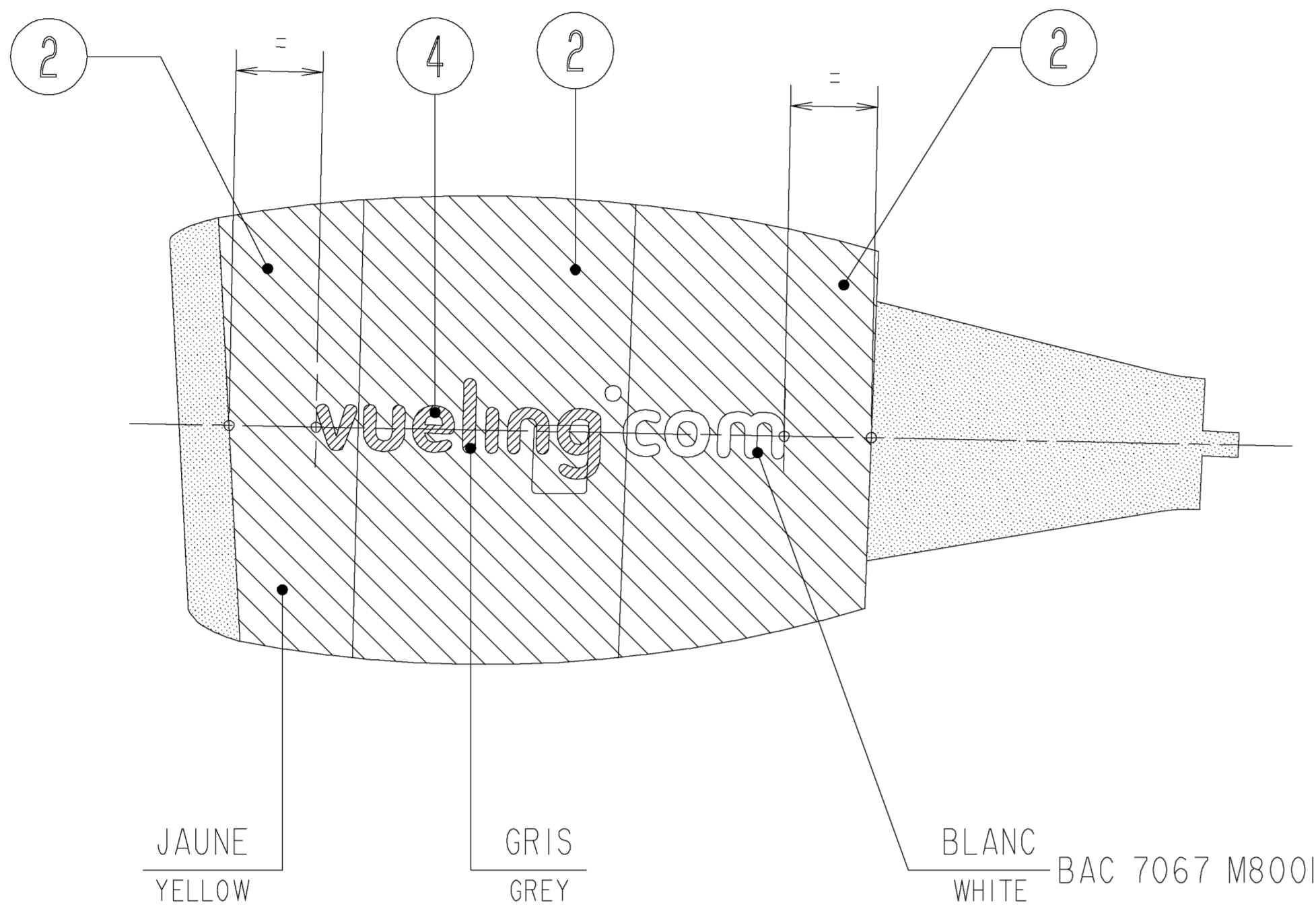
DRN CLAIRIS TECH	CHK * ARNE S.	STRESS	DWG.SYST C.T.D.
D.O.ORIG 000	APP * SARAILLE F.	WTS	PROCESS

TITLE : AIRBUS DRAPEAU EUROPEEN EUROPEAN FLAG	PROJECTION	SIZE A1
00 D112 11945	SHEET 01	A

VALABLE POUR MODIF. 150694
A PARTIR DU MSN 4661

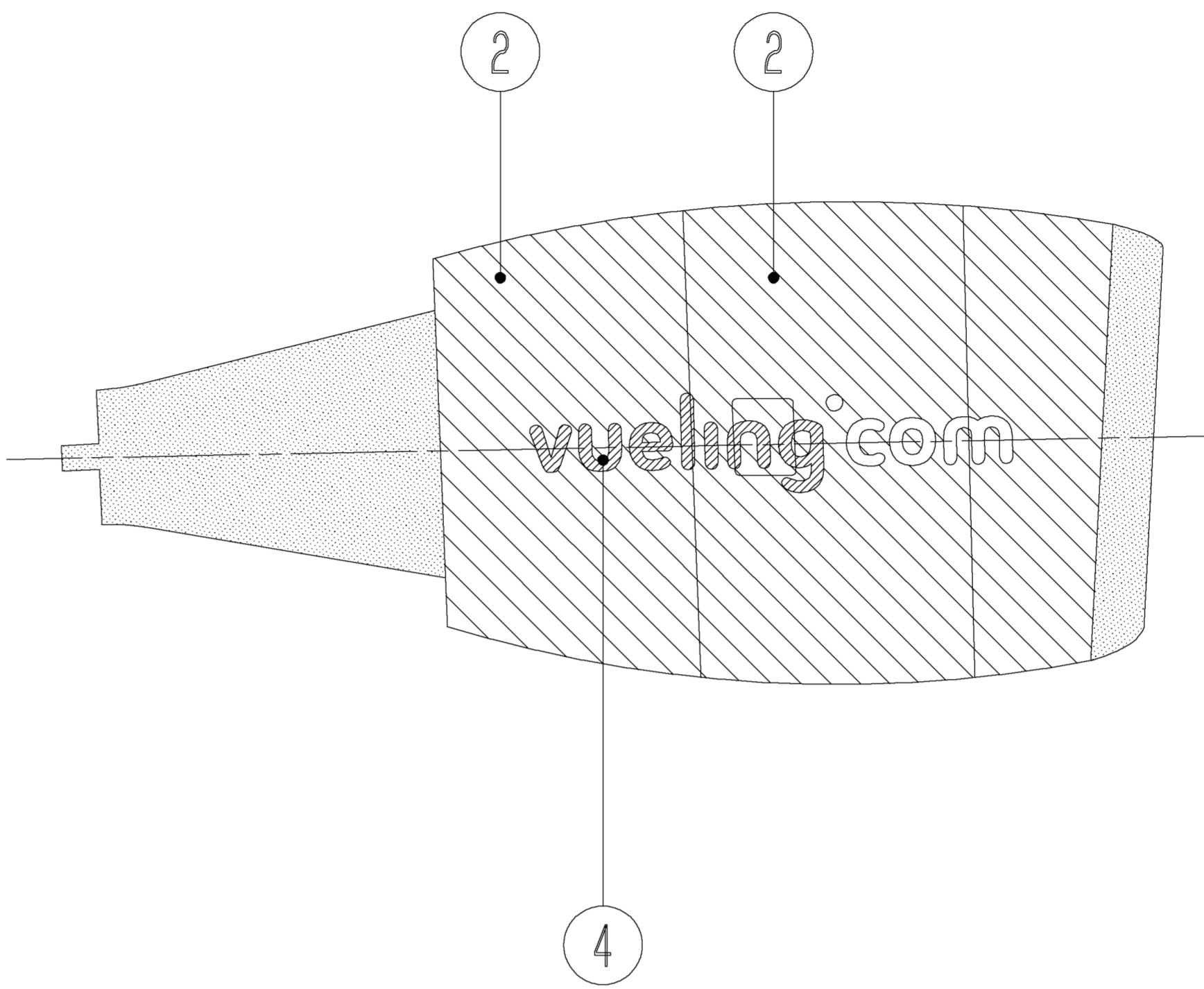
VALID FOR MODIF. 150694
FROM MSN 4661

COTE EXTERNE
EXTERNAL SIDE



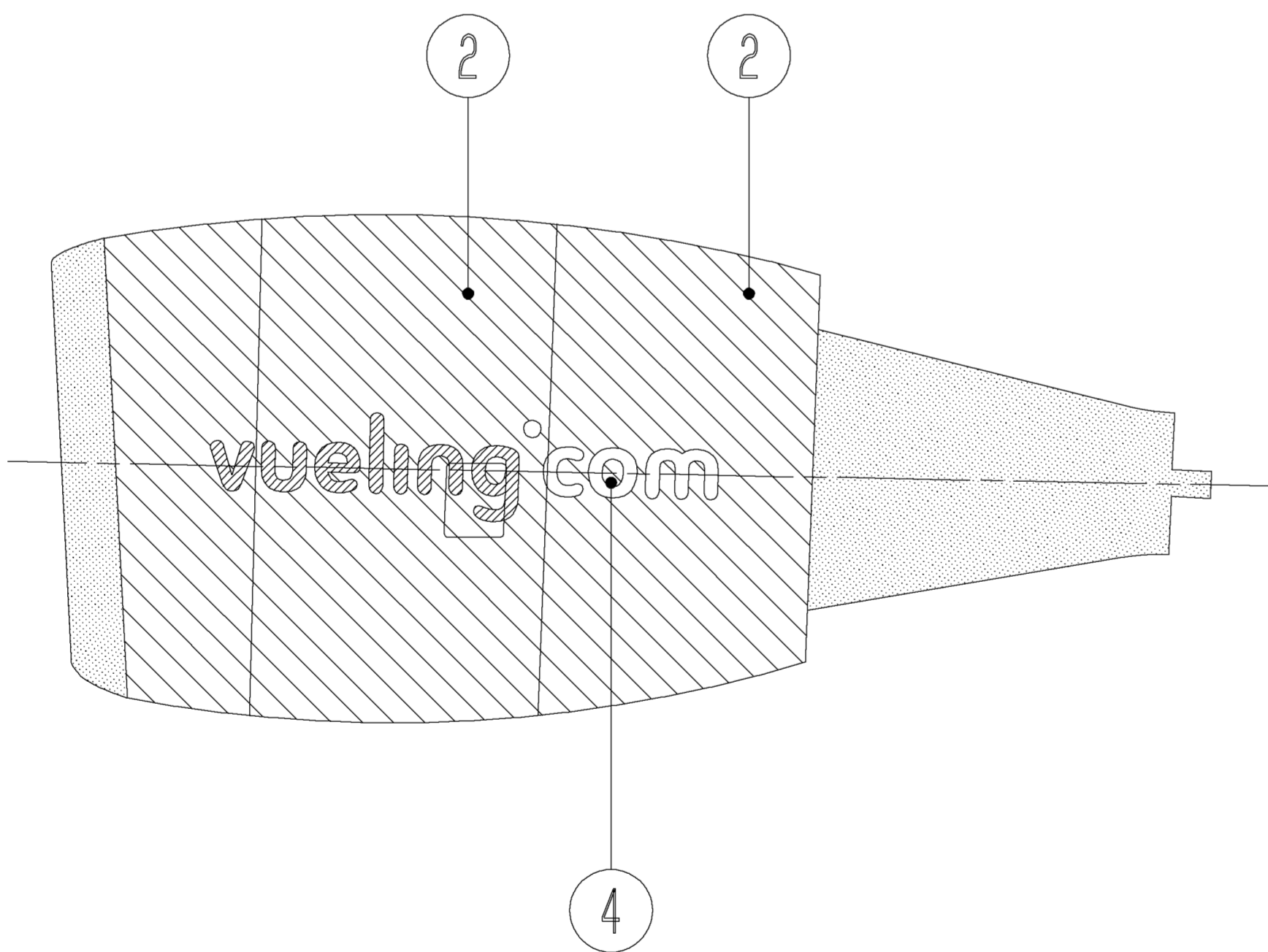
NACELLE MOTEUR GAUCHE
LEFT ENGINE NACELLE

COTE INTERNE
INTERNAL SIDE

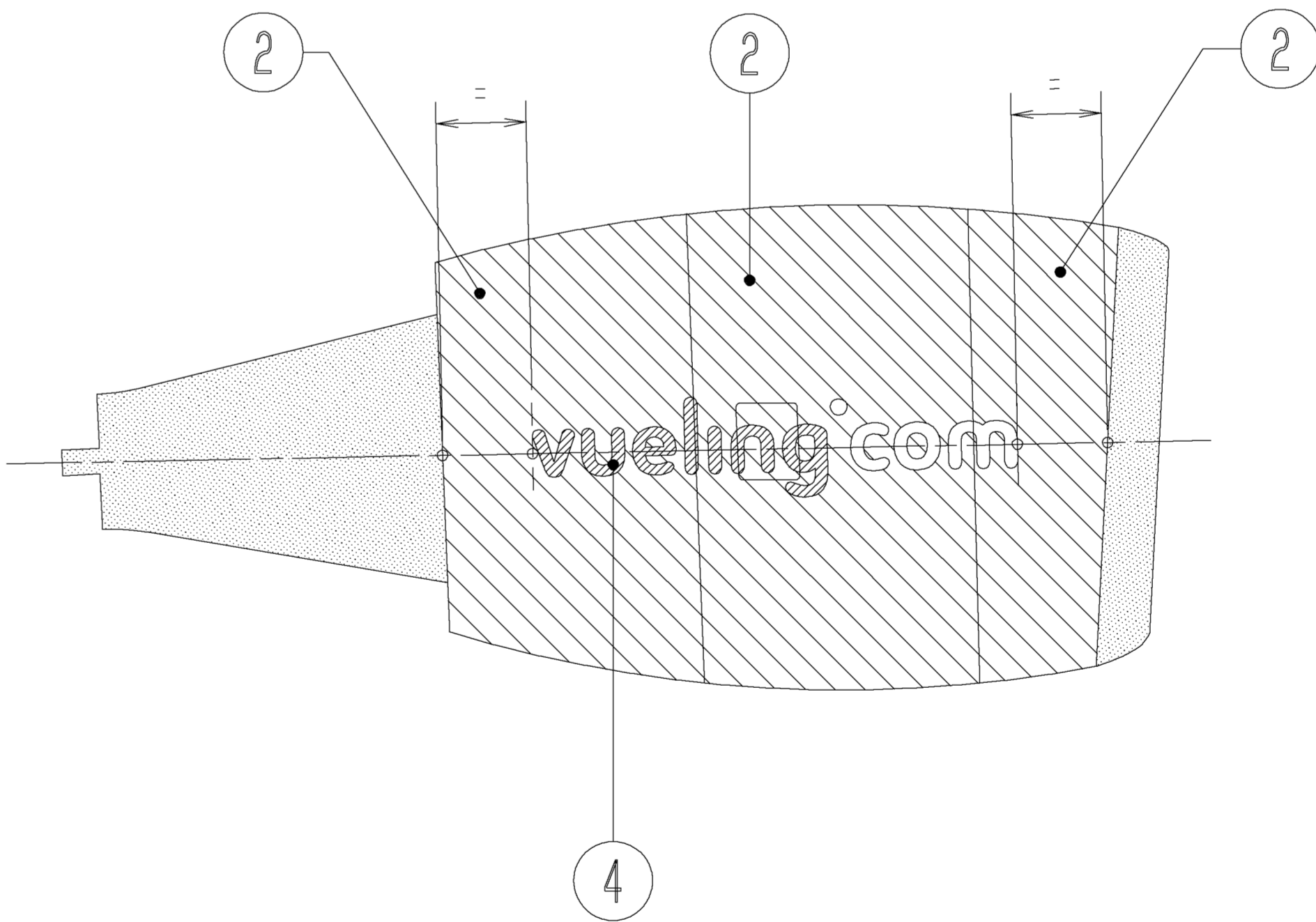


NACELLE MOTEUR DROIT
RIGHT ENGINE NACELLE

COTE INTERNE
INTERNAL SIDE



COTE EXTERNE
EXTERNAL SIDE



NOTA:

-POUR FINITION VOIR N.T. 00A007.10050
-TOLERANCE DE COLORIMETRIE SUIVANT AIQ1 2.24.049.00
-TOLERANCE EPAISSEURS DE PEINTURE SUIVANT AIQ1 2.24.036.00
-EN RAISON DES TOLERANCES DE POSITIONNEMENT DE CHAQUE CAPOT MOTEUR, IL EST POSSIBLE DE CONSTATER UN LEGER DECALAGE DE LA DECORATION TRAVERSANT LES DIFFERENTS CAPOTS

NOTE:

-TOP COAT SEE T.N. 00A007.10050.
-COLOR SHADING TOLERANCE PER AIQ1 2.24.049.00
-PAINT THICKNESS TOLERANCE PER AIQ1 2.24.036.00
-DUE TO THE TOLERANCES OF THE POSITIONS OF THE INDIVIDUAL ENGINE COWLS, IT IS POSSIBLE THAT A SLIGHT STEP MAY BE PRESENT IN THE ACROSS-COWL PAINTWORK

REFERENCES PEINTURES
PAINT CHART

NATURE	TEINTE / COLOUR	FOURNISSEUR / SUPPLIER
		MANKIEWICZ
-PRIMAIRE POLYURETHANE -POLYURETHANE PRIMER		HS I13-44
POLYURETHANE	-BLANC BAC 7067 M800I -WHITE	ALEXIT HS41I-77-908W
POLYURETHANE	-GRIS -GREY	ALEXIT HS41I-77-72QT
POLYURETHANE	-JAUNE -YELLOW	ALEXIT HS41I-77-11HY

VALABLE POUR MOD. 150694
VALID FOR MOD. 150694

Plan Cadds5 issu de Cadds4x

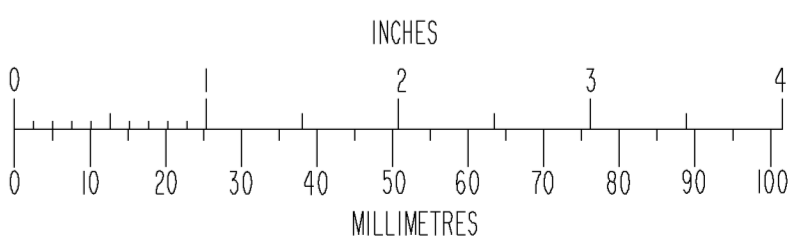
this drawing has been realized by computer, any modification will be made only by CAD means

MODIFICATIONS

ISSUE	ECN: 150694 VLG02
D	DRN: SOGECLAIR AERO



METAL NON PEINT
UNPAINTED METAL



The content of this document is the property of AIRBUS OPERATIONS S.A.S. It must not be used for any purpose other than that for which it is supplied nor may information contained in it be disclosed to unauthorized persons. It must not be reproduced in whole or in part without permission in writing from AIRBUS OPERATIONS S.A.S. © AIRBUS OPERATIONS S.A.S. 2009. All rights reserved.

LIMITS NOT STATED
ADD 0001-I SURFACE FINISH
ADD 0002 ☒ AIRBUS OPERATIONS S.A.S. CODE FABRICANT F6198

IDENTIFICATION MARKINGS
ADD 0003 INTERCHANGEABLE PART ☒ YES ☐ NO SCALE VALID FOR MASTER DRAWING ONLY
DRAWING N° 1/25

DRN SEE ECN CHK * SEE ECN STRESS SEE ECN DIMSYST SEE ECN
D.O. ORIG 000 APP * SEE ECN WTS SEE ECN PROCESS SEE ECN

TITLE: AIRBUS
DECO. NAC. WUELING
WUELING NAC. LIVERY
PROJECTION ☒ FIRST ANGLE ☐ THIRD ANGLE SIZE AO
00 D111 10396
SHEET 03
D
ISSUE

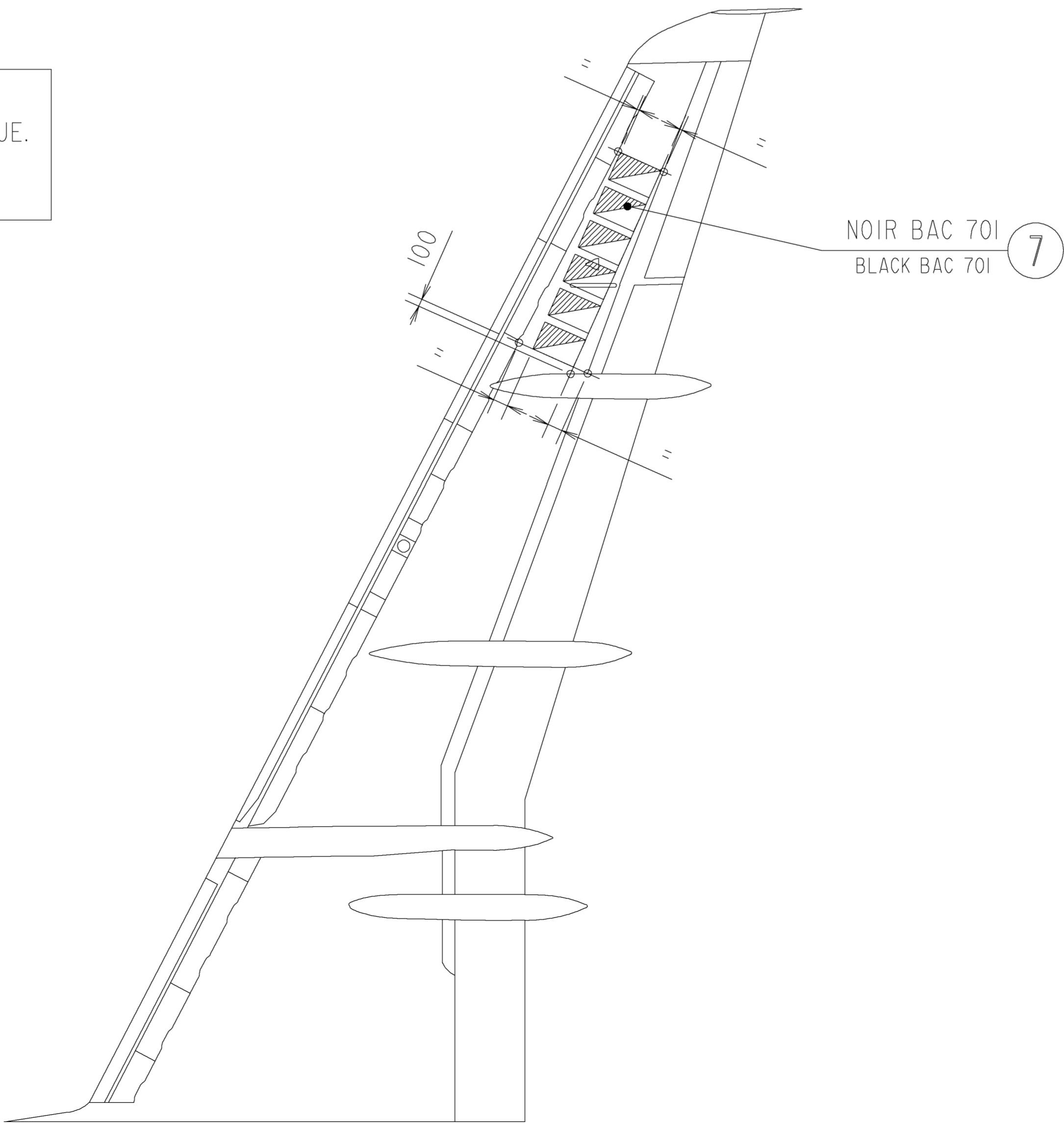
REFERENCES PEINTURES
PAINT CHART

NATURE	TEINTE / COLOUR	FOURNISSEUR / SUPPLIER MANKIEWICZ
-PRIMAIRE POLYURETHANE -POLYURETHANE PRIMER		HS 113-44
POLYURETHANE	-BLANC -WHITE BAC 7067 M8001	-ALEXIT HS411-22-908W
POLYURETHANE	-GRIS -GREY BAC 707 M9001	-ALEXIT HS411-22-71H2
POLYURETHANE	-NOIR -BLACK BAC 701	-ALEXIT HS411-22-90LI
POLYURETHANE	-GRIS -GREY	-ALEXIT HS411-22-72QT
POLYURETHANE	-JAUNE -YELLOW	-ALEXIT HS411-22-11HY
POLYURETHANE	-ROUGE -RED	-ALEXIT HS411-22-367K
POLYURETHANE	-BLEU -BLUE	-ALEXIT HS411-22-51WI

VALABLE POUR MOD. 150496
VALID FOR MOD. 150496

VALABLE ENS 006, 008 ET 010
VALID ENS 006, 008 AND 010

LE HAUT DES CARACTERES IMMATRICULATION
SUR VOILURE SERA DIRIGE VERS LE BORD D'ATTAQUE.
THE TOP OF REGISTRATION CHARACTERS ON WING
SHALL BE TOWARDS THE LEADING EDGE.



Plan Cadd5 issu de Cadd4x

this drawing has been realized by computer, any modification will be made only by CAD means

NOTA:

- 1- RADOME :
APPLIQUER FINITION SEULEMENT
- 2- TOUS LES JOINTS CAOUTCHOUC OU ELASTOMERE POUVANT ETRE PROTEGES PAR RUBAN ADHESIF NE DOIVENT PAS ETRE PEINTS.
TOUS LES JOINTS PR DES ANTENNES NE DOIVENT PAS ETRE PEINTS.
- 3- PANNEAUX RECEVANT UNE PEINTURE ANTISTATIQUE :
AFIN QUE LA CONTINUITE ELECTRIQUE AVEC LA STRUCTURE PUISSE ETRE ASSUREE PAR LES VIS DE FIXATION,
PRENDRE SOIN DE NE PAS APPLIQUER LA PEINTURE DE FINITION SUR LE VERNIS ANTISTATIQUE DES FRAISURES ET COUPELLES.
- 4- LES PITOTS, SONDES D'INCIDENCE, ANTENNES, SONDES TEMPERATURE, PARTIES DEMONTABLES DES DEPERDITEURS, ETC., NE DOIVENT PAS ETRE PEINTS.
- 5- LES PLAQUETTES TRIANGULAIRES MATERIALISANT LA REFERENCE FUSELAGE NE DOIVENT PAS ETRE PEINTES.
- 6- SAUF INDICATIONS CONTRAIRES :
LES ZONES TITANE ET ACIER INOX (Y COMPRIS LES BOUTONS POUSSOIRS ET LES VEROUS), NE DOIVENT PAS ETRE PEINTES
- 7- HUBLOTS :
7.a- HUBLOTS OBTURES, SAUF INDICATIONS CONTRAIRES :
LA PLAQUE D' OBTURATION ET LA COLLERETTE SONT PEINTES DANS LA COULEUR ENVIRONNANTE.
LES JOINTS SILICONE NE DOIVENT PAS ETRE PEINTS.
7.b- ENCADREMENTS HUBLOTS (CABINE, PORTES PASSAGERS, ISSUES DE SECOURS) DEMEURENT PEINTS AVEC LA PEINTURE POLYURETHANE SILVER RAL 9006 D'ORIGINE
- 8- VOILURE :
LES BOUCHONS PRISES DE REMPLISSAGE CARBURANT, INDICATEURS MAGNETIQUES DE NIVEAU (Y COMPRIS EMBASE) ET CLAPETS DE DRAINAGE D'EAU NE DOIVENT PAS ETRE PEINTS.
- 9- VOILURE :
LES DEPERDITEURS DE POTENTIEL NE DOIVENT PAS ETRE PEINTS.
- 10- FINITION VOIR AITN A00710050
PREVENTION DE LA CORROSION VOIR TDD51S001D
CRITERES QUALITE PEINTURE VOIR AM2435

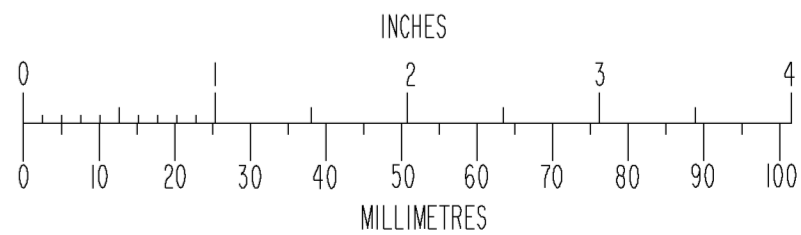
INTRADOS VOILURE GAUCHE
LEFT WING LOWER SURFACE

NOTE:

- 1- RADOME :
APPLY TOP COAT ONLY
- 2- ALL RUBBER AND ELASTOMER SEALS WHICH CAN BE MASKED BY ADHESIVE MUST NOT BE PAINTED.
ALL ANTENNAES PR SEALS MUST NOT BE PAINTED
- 3- PANELS COATED WITH ANTISTATIC PAINT :
IN ORDER TO PROVIDE AN ELECTRICAL CONTINUITY WITH THE STRUCTURE THROUGH THE ATTACHMENT BOLTS, ENSURE DO NOT APPLY THE TOP COAT ON ANTISTATIC CLEAR COAT OF COUNTERSINK AREAS AND CUPS
- 4- PITOTS, INCIDENCE SENSORS, ANTENNAES, TEMPERATURE SENSORS, REMOVABLE PARTS OF STATIC DISCHARGERS, ETC. MUST NOT BE PAINTED.
- 5- THE TRIANGULAR PLATES REPRESENTING THE FUSELAGE DATUM MUST NOT BE PAINTED.
- 6- UNLESS OTHERWISE SPECIFIED :
TITANIUM AND STAINLESS STEEL AREAS (INCLUDING PUSH BUTTONS AND SNAP LOCKS) MUST NOT BE PAINTED.
- 7- WINDOWS:
7.a- BLANKED WINDOWS, UNLESS OTHERWISE SPECIFIED :
COVER PLATE AND WINDOWS FRAME ARE PAINTED IN THE SAME COLOUR AS THE AREA WHERE THEY ARE LOCATED.
THE SILICONE SEALS MUST NOT BE PAINTED.
7.b- WINDOWS FRAMES (CABIN, PAX DOORS, EMERGENCY EXITS) REMAIN PAINTED WITH THE ORIGINAL SILVER RAL 9006 POLYURETHANE.
- 8- WING :
REFUEL COUPLING CAPS, MAGNETIC LEVEL INDICATORS (INCLUDING BASE) AND WATER DRAIN VALVES MUST NOT BE PAINTED.
- 9- WING :
THE STATIC DISCHARGER MUST NOT BE PAINTED.
- 10- TOP COAT, SEE AITN A00710050
CORROSION PREVENTION SEE TDD51S001D
EXTERNAL PAINTING QUALITY CRITERIA SEE AM2435

MODIFICATIONS

ISSUE	ECN: 150496 VLG02
H	DRN: SOGECLAIR AERO
ISSUE	ECN: 28484 VLG02
J	DRN: SOGECLAIR AERO
ISSUE	ECN: 150496 VLG02
K	DRN: SOGECLAIR AERO



The content of this document is the property of AIRBUS OPERATIONS S.A.S. It must not be used for any purpose other than that for which it is supplied nor may information contained in it be disclosed to unauthorized persons. It must not be reproduced in whole or in part without permission in writing from AIRBUS OPERATIONS S.A.S. © AIRBUS OPERATIONS S.A.S. 2008. All rights reserved.

LIMITS NOT STATED ABD 0001-I		SURFACE FINISH ABD 0002		✓ AIRBUS OPERATIONS S.A.S. CODE FABRICANT F6198	
IDENTIFICATION MARKINGS ABD 0003		INTERCHANGEABLE PART DRAWING N°		SCALE VALID FOR MASTER DRAWING ONLY 1/50	
DRN SEE ECN	CHK * SEE ECN	STRESS SEE ECN	DWG SYST SEE ECN		
D.O. ORIG 000	APP * SEE ECN	WTS SEE ECN	PROCESS SEE ECN		
TITLE: AIRBUS DECO EXT. VUELING VUELING EXT. LIVERY				PROJECTION 00 D111 10401 SHEET 04 A	

K
ISSUE

